

SHARP

MUSIC SYSTEM FOR iPod

MODEL

DK-AP7N(R)
DK-AP7N(S)
DK-AP7N(W)

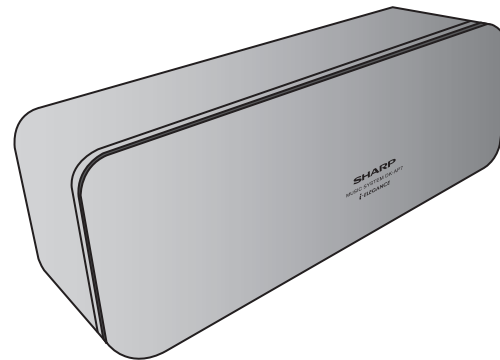
OPERATION MANUAL



iPod is a trademark of Apple Inc., registered in the U.S. and other countries.



Thank you for purchasing this SHARP product. To obtain the best performance from this product, please read this manual carefully. It will guide you in operating your SHARP product.



DK-AP7N(R)
DK-AP7N(S)
DK-AP7N(W)

ENGLISH

General Information

E-1

ENGLISH

Special notes

Warning:

- When the unit is set at STAND-BY mode, mains voltage is still present inside the unit.
- This unit contains no user serviceable parts. Never remove covers unless qualified to do so. This unit contains dangerous voltages, always remove mains plug from the socket before any service operation and when not in use for a long period.
- The supplied AC/DC adaptor contains no user serviceable parts.
Never remove covers unless qualified to do so. It contains dangerous voltages, always remove mains plug from the main outlet socket before any service operation or when not in use for a long period.
- The AC/DC adaptor supplied with the DK-AP7N(R)/DK-AP7N(S)/DK-AP7N(W) must not be used with other equipment.
- Never use an AC/DC adaptor other than the one specified. Otherwise, problems or serious hazards may be created.
- To prevent fire or shock hazard, do not expose this appliance to dripping or splashing. No objects filled with liquids, such as vases, shall be placed on the apparatus.
- Do not turn the volume on to full at switching the unit on. Listen to music at moderate levels.

Note for users in United Kingdom:

Recording and playback of any material may require consent, which SHARP is unable to give. Please refer particularly to the provisions of the Copyright Act 1956, the Dramatic and Musical Performers Protection Acts 1958, the Performers Protection Acts 1963 and 1972 and to any subsequent statutory enactments and orders.

Note for users in Australia:

Copyright may exist in material you wish to record. Copying or broadcasting such material without permission of the relevant licensees or owners of the copyright is prohibited by law. SHARP is not in a position to authorize the copying or broadcasting of copyright materials and nothing in this OPERATION MANUAL should be implied as giving that authority.

For other countries:

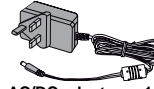
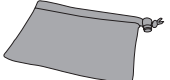
Audio-visual material may consist of copyrighted works which must not be recorded without the authority of the owner of the copyright. Please refer to the relevant laws in your country.

"Made for iPod" means that an electronic accessory has been designed to connect specifically to iPod and has been certified by the developer to meet Apple performance standards.

Apple is not responsible for the operation of this device or its compliance with safety and regulatory standards.

Accessories

Please confirm that only the following accessories are included.

 <p>AC/DC adaptor x 1</p>	 <p>AC/DC adaptor x 1 (for Australia only)</p>
 <p>AC/DC adaptor x 1 (for United Kingdom and Eire only) RADPAA057AWZZ</p>	 <p>Plug adaptor x 1 (for Philipines only)</p>
 <p>Carry case x 1 (unit)</p>	 <p>Carry case x 1 (AC/DC adaptor)</p>
 <p>iPod adaptor x 4</p>	

2009 February 27

Contents

	Page
■ General Information	
Precautions	3
Controls and indicators	4 - 5
■ Preparation for Use	
System connections	6 - 7
■ Basic Operation	
General control	8
■ iPod	
Listening to the iPod	9 - 10
■ Advanced Feature	
Enhancing your system	11
■ References	
Troubleshooting chart	12-13
Maintenance	13
Specifications	14

DK-AP7N(R)
DK-AP7N(S)
DK-AP7N(W)

ENGLISH

General Information

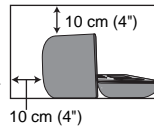
E-2

DK-AP7N_A6_EN_SCA.fm

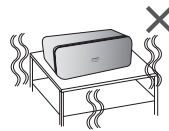
Precautions

■ General

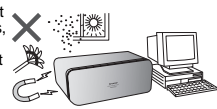
- Please ensure that the equipment is positioned in a well-ventilated area and ensure that there is at least 10 cm (4") of free space along the sides, top and back of the equipment.



- Use the unit on a firm, level surface free from vibration.



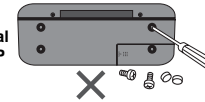
- Keep the unit away from direct sunlight, strong magnetic fields, excessive dust, humidity and electronic/electrical equipment (home computers, facsimiles, etc.) which generate electrical noise.



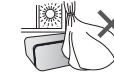
- Do not place anything on top of the unit.
- Do not expose the unit to moisture, to temperatures higher than 60°C (140°F) or to extremely low temperatures.
- If your system does not work properly, disconnect the AC/DC adaptor from the wall socket. Plug the AC/DC adaptor back in, and then turn on your system.
- In case of an electrical storm, unplug the unit for safety.
- Do not use an external power supply other than the 6V DC supplied with this unit as it may be damaged.
- SHARP is not responsible for damage due to improper use. Refer all servicing to a SHARP authorised service centre.

- Hold the AC/DC adaptor by the head when removing it from the wall socket, as pulling the lead can damage internal wires.
- The AC/DC adaptor is used as a disconnect device and shall always remain readily operable.

- **Do not remove the outer cover, as this may result in electric shock. Refer internal service to your local SHARP service facility.**



- The ventilation should not be impeded by covering the ventilation openings with items, such as newspapers, tablecloths, curtains, etc.



- No naked flame sources, such as lighted candles, should be placed on the apparatus.
- Attention should be drawn to the environmental aspects of battery disposal.
- The apparatus is designed for use in moderate climates.
- This unit should only be used within the range of 5°C - 35°C (41°F - 95°F).

Warning:

The voltage used must be the same as that specified on this unit. Using this product with a higher voltage other than that which is specified is dangerous and may result in a fire or other type of accident causing damage. SHARP will not be held responsible for any damage resulting from use of this unit with a voltage other than that which is specified.

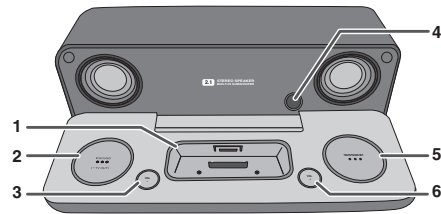
■ Volume control

The sound level at a given volume setting depends on speaker efficiency, location and various other factors. It is advisable to avoid exposure to high volume levels. Do not turn the volume on to full at switch on. Listen to music at moderate levels.

Controls and indicators

DK-AP7N(R)
DK-AP7N(S)
DK-AP7N(W)

ENGLISH



■ Front View

	Reference page
1. iPod Dock	10
2. ESOUND/TV Out Button	8
3. Volume Down Button	8
4. Subwoofer Duct	8
5. ON/STAND-BY Button	8
6. Volume Up Button	8



■ Back View

	Reference page
1. Video Out Socket	6
2. Auxiliary Input Socket	11
3. DC Input Socket	6

General Information

E-4

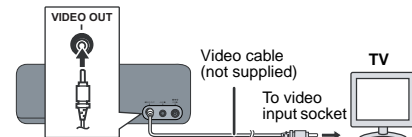
System connections

Make sure to unplug the AC/DC adaptor before making any connections.

■ Connecting iPod to TV

Photo and video files from iPod can be viewed by connecting the system to TV/monitor.

If the TV/monitor has a video input, connect it to the VIDEO OUT socket at the back of the unit and set the TV Out on the iPod unit to "ON" position.



■ Watching videos on a TV connected to iPod

- 1 Enter the iPod menu.**
Press the ESOUND (-TV OUT) button until the ESOUND LED blinks twice to display video on the TV screen.
- 2 Select the desired video from the iPod unit.**
- 3 Press the ►|| button on the iPod unit to start playback.**
For iPod touch, playback will automatically start once the desired video is selected.

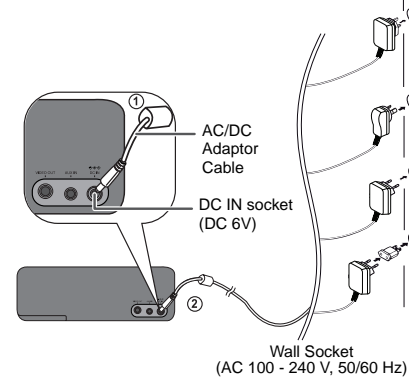
Notes:

- If the TV Out setting is already turned ON at video menu, the video is automatically displayed on the TV screen when iPod starts playback.
- To return to watching video on iPod screen, repeat steps 1 to 3.
- During iPod video playback, pressing the ESOUND (-TV OUT) button until the ESOUND LED blinks twice will not toggle video out display between iPod and TV.

- Please make sure to set iPod unit to either NTSC or PAL to match your TV signal. Please visit Apple's home page for further information.
- Customer should also refer iPod operation manual before making video out setting.

■ Using with the AC/DC adaptor

- 1 Plug the AC/DC adaptor cable into the DC IN socket on the unit.**
- 2 Plug the AC/DC adaptor into a wall socket.**



Notes:

- Unplug the AC/DC adaptor from the wall socket if the unit will not be used for a prolonged period of time.
- Connecting the AC/DC adaptor to the unit disconnects the batteries.
- Use only the supplied AC/DC adaptor. Using other AC/DC adaptor may cause an electric shock or fire.

DK-AP7N(R)
DK-AP7N(S)
DK-AP7N(W)

ENGLISH

Preparation for Use

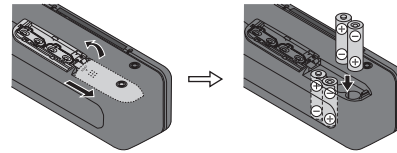
E-7

System connections (continued)

■ Using with the batteries

Use 4 "AA" size batteries (UM/SUM-3, R6, HP-7 or similar). Batteries are not included.

- 1 Open the battery cover.**
Slide the cover in the direction of the arrow.
- 2 Insert the batteries according to the direction indicated in the battery compartment.**
- 3 Close the cover.**



Note:

Remove the batteries if the unit is not to be used for long period of time to prevent battery leakage which may cause potential damage.

Battery replacement:

When batteries are low, sound may become distorted and unit may automatically turn off during high volume level. Reduce the volume level or replace the batteries.

Battery life:

Battery type	ALKALINE (AA) (1.5V)
Usage time	Approx. 8 hrs.
Output Front	48mW + 48mW
Output Subwoofer	80mW

Note:

Battery life may vary depending on the temperature, battery types and usage conditions.

Precautions for battery use:

- Installing the batteries incorrectly may cause the unit to malfunction.
- Insert the batteries according to the direction indicated in the battery compartment.
- Remove the batteries if the unit will not be used for a long period of time. This will prevent potential damage due to battery leakage.
- When using batteries, the brightness of all illumination light (indicators) is reduced compared to using AC/DC adaptor.
- Replace all old batteries with new ones at the same time.
- Do not mix old and new batteries.
- Batteries (battery pack or batteries installed) shall not be exposed to excessive heat such as sunshine, fire or the like.

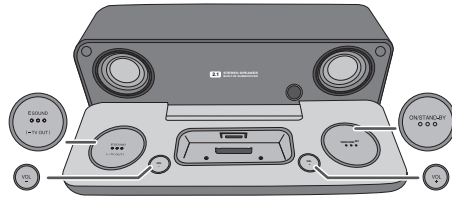
Caution:

Do not use rechargeable batteries (nickel-cadmium battery, etc.).

Changing power source:

Turn off the unit before changing the power source. If the 6V DC power supply is directly plugged in during power on, the unit may automatically enter to stand-by mode. Press the ON/STAND-BY button again to turn on the unit.

General control



■ To turn the power on

Press the ON/STAND-BY button to turn the power on. The POWER and ESOUND indicator will turn on.

After use:

Press the ON/STAND-BY button to enter the power stand-by mode. The POWER indicator will turn off.

Note:

This unit consumes low current during stand-by mode. However, please remove the batteries if the unit will not be used for a long period of time.

■ Volume control

Press the VOL (+ or -) button to increase or decrease the volume.

POWER indicator will be blinking when the volume reaches maximum or minimum level.

■ ESOUND control

When ON/STAND-BY button is pressed, the ESOUND indicator turns yellowish orange. You are now in the ESOUND mode, where low bass and high frequency are automatically adjusted according to the volume input.

To turn off ESOUND, press the ESOUND (-TV OUT) button. The ESOUND indicator will go off.

Listening to the iPod

Supported iPod models:

- iPod nano (software 1.2 above)
- iPod mini (software 1.2 above)
- iPod (5th generation) (software 1.3 above) (Dock connector equipped Click Wheel model)
- iPod (4th generation) (software 3.0.2 above) (Dock connector equipped Click Wheel model)
- iPod nano (2nd generation) (software 1.0.0 above)
- iPod nano (3rd generation) (software 1.0.3 above)
- iPod nano (4th generation) (software 1.0.3 above)
- iPod classic (software 1.0.3 above)
- iPod touch (software 1.1 above)
- iPod touch (2nd generation) (software 2.1 above)

Caution:

- Please update your iPod unit to the latest software version before using it. Please visit Apple's homepage to download the latest version for your iPod.

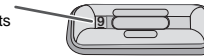
Notes:

- Once the iPod is connected to the unit it will begin charging when AC/DC adaptor is used.
- The iPod unit will not be charged whilst the main unit use the batteries as power supply.

■ iPod adaptor connection

Choose the iPod adaptor that fits your iPod. Your iPod will fit snugly into the correct adaptor. If your iPod is not mentioned below, an iPod adaptor may have been included with your iPod unit.

The marking shows which iPod fits



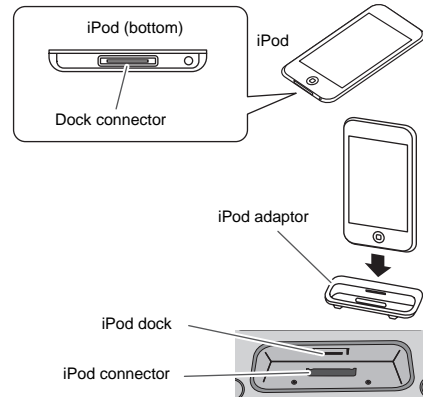
iPod Adaptor No.	iPod Description	Capacity
9	5G iPod (with video)	30GB
9	U2 iPod with video	30GB
9	iPod classic	80GB, 120GB
10	5G iPod with video	60GB & 80GB
10	iPod classic	160GB
A	iPod mini	4GB & 6GB
A	4G iPod & U2 iPod	20GB
A	iPod photo & Colour U2 iPod	20GB & 30GB
A	iPod with colour display	20GB
B	4G iPod	40GB
B	iPod photo	40GB & 60GB
B	iPod with colour display	60GB

Notes:

- iPod nano (2nd generation), iPod nano (3rd generation), iPod nano (4th generation), iPod touch and iPod touch (2nd generation) are not compatible with the iPod adaptors listed above. Please use the adaptor supplied with your iPod unit.
- If you have an iPod that does not have an iPod 30 Pin connector, you can use an audio cable to connect it to the AUX IN socket.
- iPhone is not supported by this system.

■ To insert iPod adaptor

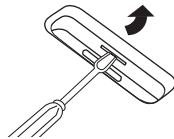
1. Insert the iPod adaptor into unit and connect your iPod.



Caution:
Unplug all accessories for the iPod before inserting it into the iPod dock.

■ To remove iPod adaptor

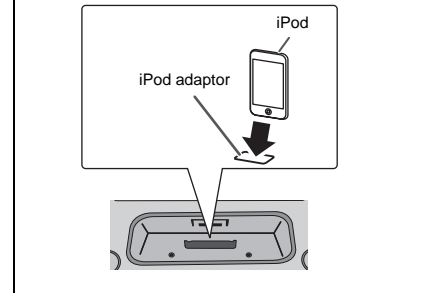
Insert the tip of a screwdriver ("-" type, small) into the iPod adaptor hole as shown and lift upward to remove.



■ iPod playback

- 1 Press the ON/STAND-BY button to turn the power on.
- 2 Insert iPod unit in the iPod dock of main unit.
- 3 Press the ►|| button on the iPod unit to start playback.

For iPod touch, playback will automatically start once the desired file is selected.



■ To disconnect iPod

Simply remove the iPod from the iPod dock. It is safe to do so even during playback.

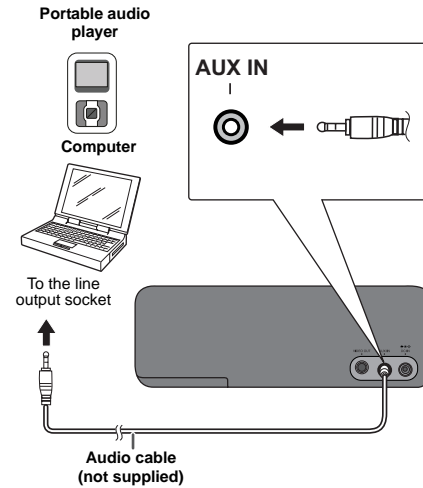
DK-AP7N(R)
DK-AP7N(S)
DK-AP7N(W)

Enhancing your system

ENGLISH

Advanced Feature

The audio cable is not included. Purchase a separate audio cable as shown below.



■ Listening to the audio/video sounds from portable audio player, computer, etc.

- 1 Use Audio cable to connect the portable audio player, computer etc. to the AUX IN socket.**
When using video equipment, connect the audio output to this unit and the video output to a television.
- 2 Press the ON/STAND-BY button to turn the power on.**
- 3 Play the connected equipment.**
If volume level of the connected device is too high, sound distortion may occur. Should this happen, lower the volume of the connected device.

Notes:

- To prevent noise interference, place the unit away from the television.
- Make sure to undock the iPod before making any connections to AUX IN. Otherwise, sound from AUX IN will not be heard.

E-11

Troubleshooting chart

Many potential problems can be resolved by the owner without calling a service technician.

If something is wrong with this product, check the following before calling your authorised SHARP dealer or service centre.

■ General

Symptom	Possible cause
<ul style="list-style-type: none"> When a button is pressed, the unit does not respond. 	<ul style="list-style-type: none"> Set the unit to the power stand-by mode and then turn it back on.
<ul style="list-style-type: none"> No sound is heard. 	<ul style="list-style-type: none"> Is the volume level set to minimum?

■ iPod

Symptom	Possible cause
<ul style="list-style-type: none"> No sound is produced. No image appears on the TV/monitor. 	<ul style="list-style-type: none"> The iPod is not playing. The iPod is not properly connected to the unit. Is the AC/DC adaptor of the unit plugged in? The video cable is not properly connected. The TV/monitor's input selection is not properly set.
<ul style="list-style-type: none"> iPod will not charge. 	<ul style="list-style-type: none"> The iPod is not making full contact with the iPod connector. The main unit is using batteries as power supply. Using 3rd generation iPod.

■ Condensation

Sudden temperature changes, storage or operation in an extremely humid environment may cause condensation inside the cabinet.

Condensation can cause the unit to malfunction. If this happens, leave the power on until normal playback is possible (about 1 hour) before operating the unit.

■ If problem occurs

When this product is subjected to strong external interference (mechanical shock, excessive static electricity, abnormal supply voltage due to lightning, etc.) or if it is operated incorrectly, it may malfunction.

If such a problem occurs, do the following:

- 1 Set the unit to the stand-by mode and turn the power on again.
- 2 If the unit is not restored in the previous operation, unplug and plug in the unit, and then turn the power on.

■ Before transporting the unit

Undock the iPod and close the unit. The unit will automatically enter stand-by mode.

CAUTION: Carrying the unit with iPod docked might damage both the system and the iPod.

Maintenance

■ Cleaning the unit

Periodically wipe the unit with a clean soft cloth.

Caution:

- Do not use chemicals for cleaning (petrol, paint thinner, etc.). It may damage the unit finishing.
- Do not apply oil to the inside of the unit. It may cause malfunctions.

Specifications

As part of our policy of continuous improvement, SHARP reserves the right to make design and specification changes for product improvement without prior notice. The performance specification figures indicated are nominal values of production units. There may be some deviations from these values in individual units.

■ General

Power source	DC IN 6V \equiv 2A: AC/DC adaptor (AC 100 - 240 V ~ 50/60 Hz) DC IN 6V \equiv ["AA" size (UM/SUM-3, R6 or HP-7) battery x 4]
Power consumption	Power on: 5 W Power stand-by: 0.6 W(*)
Output power	Front speakers: MPO: 3.04 W (1.52 W + 1.52 W) (10% T.H.D.) RMS: 2.4 W (1.2 W + 1.2 W) (10% T.H.D.) RMS: 2.08 W (1.04 W + 1.04 W) (0.9% T.H.D.) Subwoofer: MPO: 2.23 W (10% T.H.D.) RMS: 2 W (10% T.H.D.) RMS: 1.6 W (0.9% T.H.D.)
Speaker	2.1-way type speaker system Front speaker: 3.0 cm (1-1/8") Subwoofer: 4.6 cm (1-3/4")
Speaker maximum input power	Front speaker: 2.0 W / channel Subwoofer: 4 W
Speaker rated input power	Front speaker: 1.2 W / channel Subwoofer: 2 W

Output terminals	Video output: 1Vp-p
Input terminals	Auxiliary (audio signal): 500 mV/47 k ohms
Dimensions	Width: 198 mm (7-4/5") Height: 69.8 mm (2-7/10") Depth: 77 mm (3")
Weight	0.59 kg (1.3 lbs.)

(*) This power consumption value is obtained when in the power stand-by mode.

DK-AP7N(R)
DK-AP7N(S)
DK-AP7N(W)

ENGLISH

References

E-14

